



POOL BREAKDOWN



CENTURY 41' x 21' OVAL 52" STEEL TOP RAIL - STEEL VERTICAL

✓	QTY	CARTON NUMBER	CARTON DESCRIPTION
	1	5-9911-730	ASSEMBLY PACK CARTON
	1	5-9812-700	TOP RAIL PACK CARTON
	1	5-9814-700	TOP RAIL PACK CARTON
	1	5-9716-700	VERTICAL PACK CARTON
	1	5-XXXX-011	SIDEWALL CARTON
	1	5-9999-1710	TOP CONNECTOR PACK
	1	5-9999-1716	TOP CONNECTOR PACK
	1	5-8852-405	SIDE SUPPORT CARTON
	1	5-8852-605	SIDE SUPPORT CARTON
	1	5-8888-204	SUPPORT BASE CARTON
	1	5-8888-206	SUPPORT BASE CARTON
	1	5-9116-700	SKIRT PACK CARTON



CARTON BREAKDOWN

✓	ITEM	QTY	PART NUMBER	DESCRIPTION
TOP RAIL PACK # 5-9812-700				
	1a	12	587-1578	Top Rail
TOP RAIL PACK # 5-9814-700				
	1a	14	587-1578	Top Rail

CARTON BREAKDOWN

✓	ITEM	QTY	PART NUMBER	DESCRIPTION
SKIRT PACK # 5-9116-700				
	2	16	340-2553	Vertical skirt
	3	32	330-1023	Hex washer head screw #8 x 5/8"
	4	32	330-1127	Sheet metal screw, #10 x 1/2"

ASSEMBLY PACK # 5-9911-730				
	5	8	583-1011	Stabilizer Rail (Large)
	5	10	583-1005	Stabilizer Rail (Large)
	6	12	583-1004	Stabilizer Rail (Small)
	7	32	580-2299	Vertical End Cap
	7a	10	580-2056	Side vertical end cap
	8	26	580-2055	Outer connector bracket
	10	55	545-1001	Plastic coping
	11	14	589-1049	Bottom rail - stamped 21
	11a	4	589-1053	Bottom rail - transition - stamped TR
	11b	8	589-1052	Bottom rail - side - stamped S
	16	214	330-1127	Sheet metal screw, #10 x 1/2"
	17	16	510-1038	Machine screw #6-32 x 1/2"
	18	16	321-1088	Hex nut #6-32
	18a	10	510-1008	Slotted pan head machine screw #10-24 - 1/2"
	18b	10	321-1025	Square nut #10-24
	—	1	573-4406	Pool Parts List
	—	1	573-4036	Installation Instructions
	—	1	— — —	Warranty Card
	—	1	573-3169	"Safety First" Booklet

TOP CONNECTOR PACK # 5-9999-1710				
	9	10	340-2644	Top connector

TOP CONNECTOR PACK # 5-9999-1716				
	9	16	340-2644	Top connector

VERTICAL PACK # 5-9716-700				
	19	16	580-2278	Vertical

SIDEWALL CARTON				
	28	1	5-XXXX-011	Sidewall
	29	26	330-1280	1/4-20 x 1/2" Grade 5 Bolt
	30	26	321-1029	1/4-20 Hex Flange Locknut
	31	1	535-1442	Protective Strip
	—	1	560-1055	Warning Sign
	—	1	573-3169	"Safety First" Booklet
	—	1	573-3498	Safety DVD

WRITE SIDEWALL NUMBER HERE _____

WRITE SIDEWALL BOX SERIAL NUMBER HERE _____

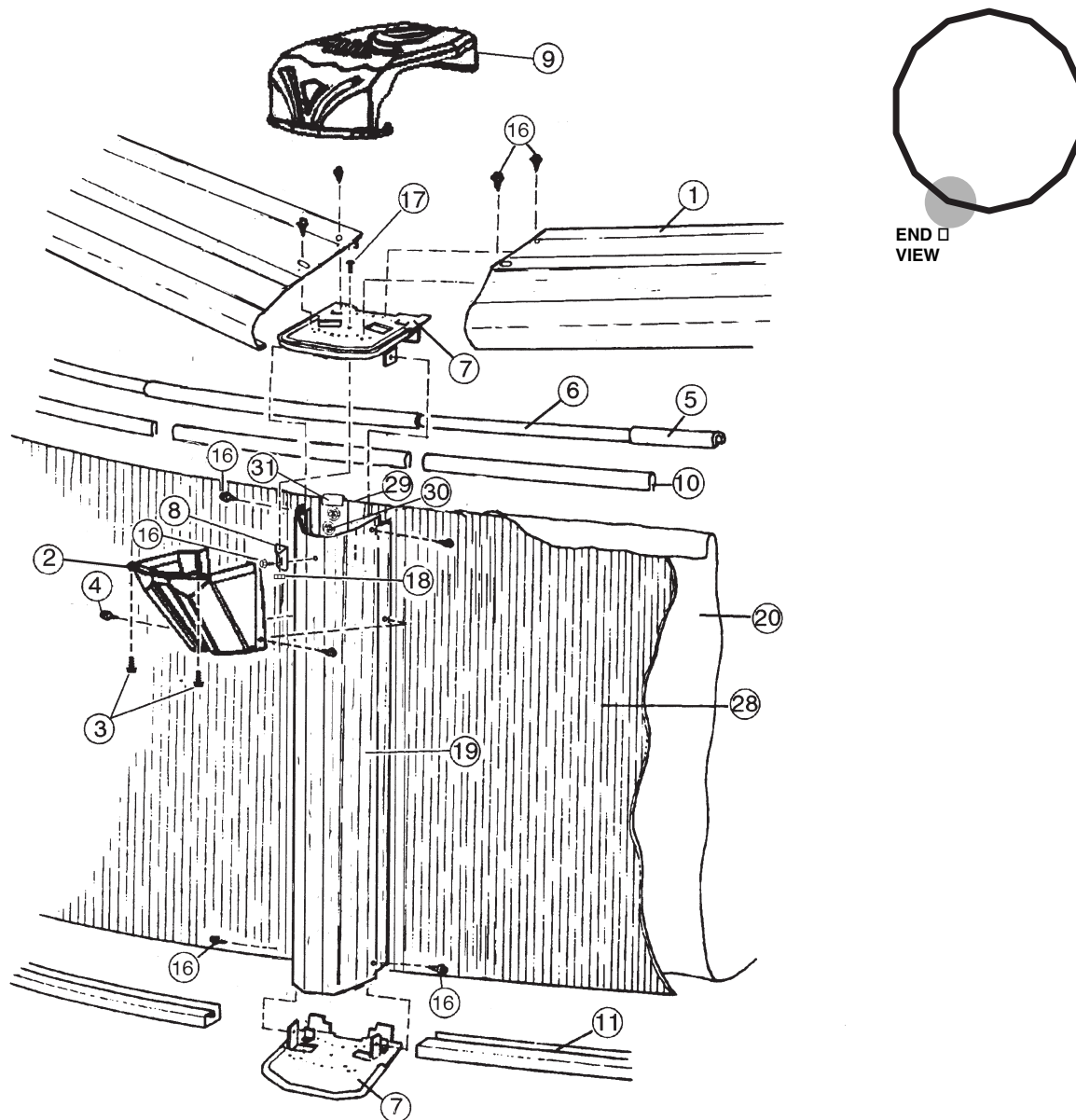
SUPPORT BASE PACK # 5-8888-204 & 5-8888-206 (1 ea. Required)

34	10	580-1779	Skid support
35	10	580-2071	Ground support - top
36	10	580-2072	Ground support - bottom
37	10	580-1870	Pressure pad
38	10	580-1869	Pressure pad
39	10	580-1792	Btm rail locator & cover
40	60	510-1035	#12x3/4" hex washer head screw
41	40	330-1220	3/8"-16 x 3-1/2" hex head bolt
42	40	321-1069	3/8"-16 hex nut
43	40	510-1018	1/4-20 x 1/2" hex head bolt - grade 5
44	40	511-1000	1/4-20 hex nut
45	60	330-1127	Sheet metal screw, #10 x 1/2"

SIDE SUPPORT PACK # 5-8852-405 & 5-8852-605 (1 ea. Required)

46	10	580-2089	Side support
----	----	----------	--------------

EXPLODED PARTS VIEW



SIDE VIEW

